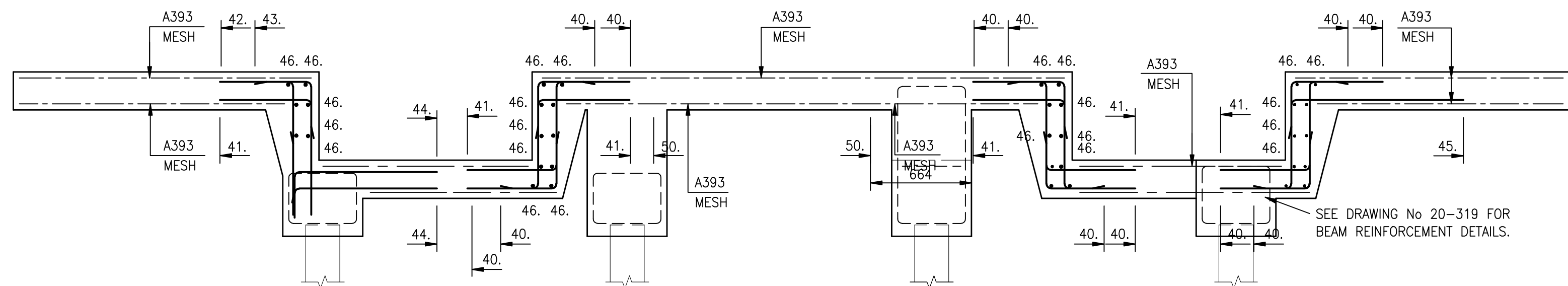
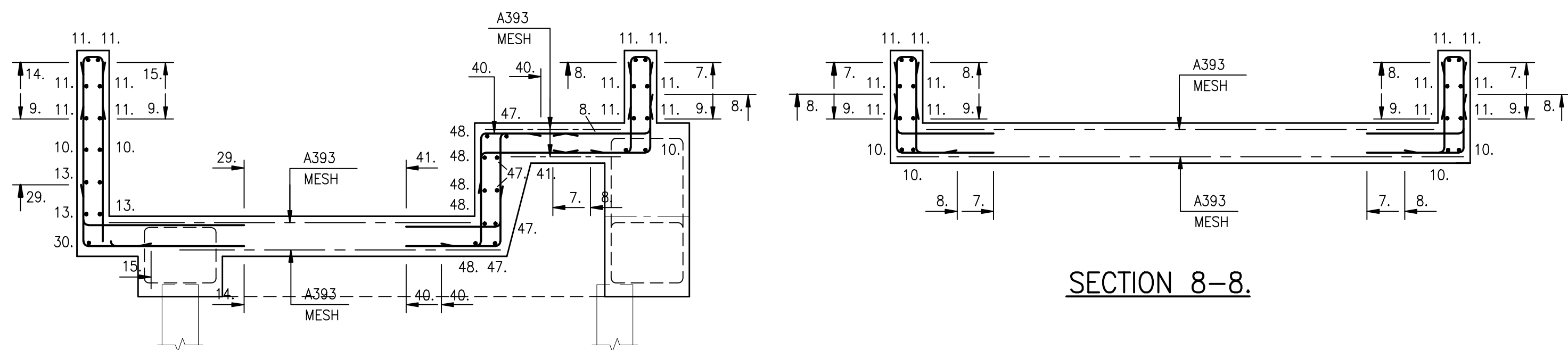


PLAN ON BARRIER PIT SLAB.

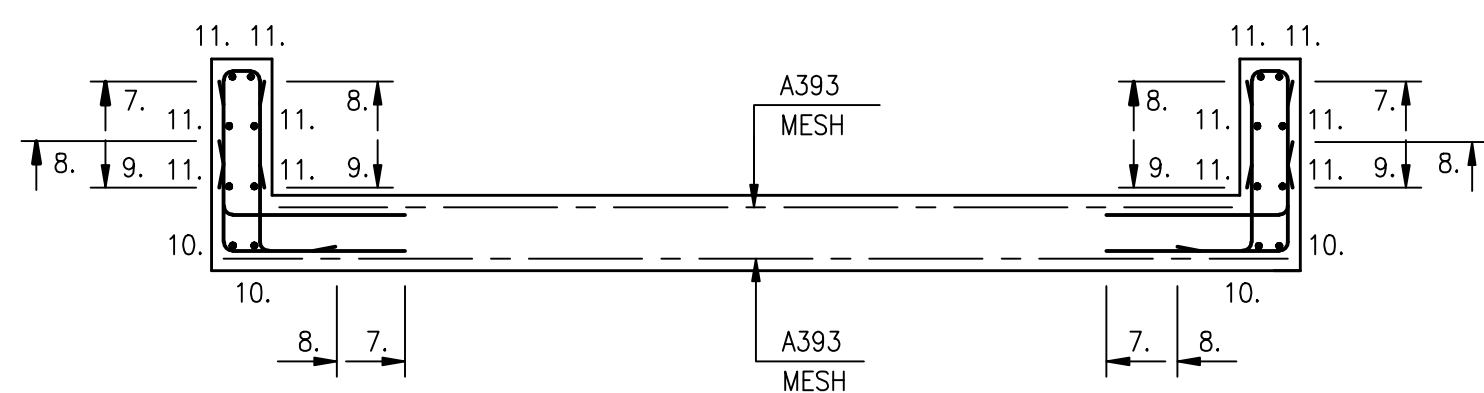
BARRIER PIT SLAB TO RECEIVE 2 LAYERS OF A393 MESH,
1 TOP & 1 BOTTOM FIXED WITH 40 COVER & 400 MIN LAPS.
SEE SECTIONS.



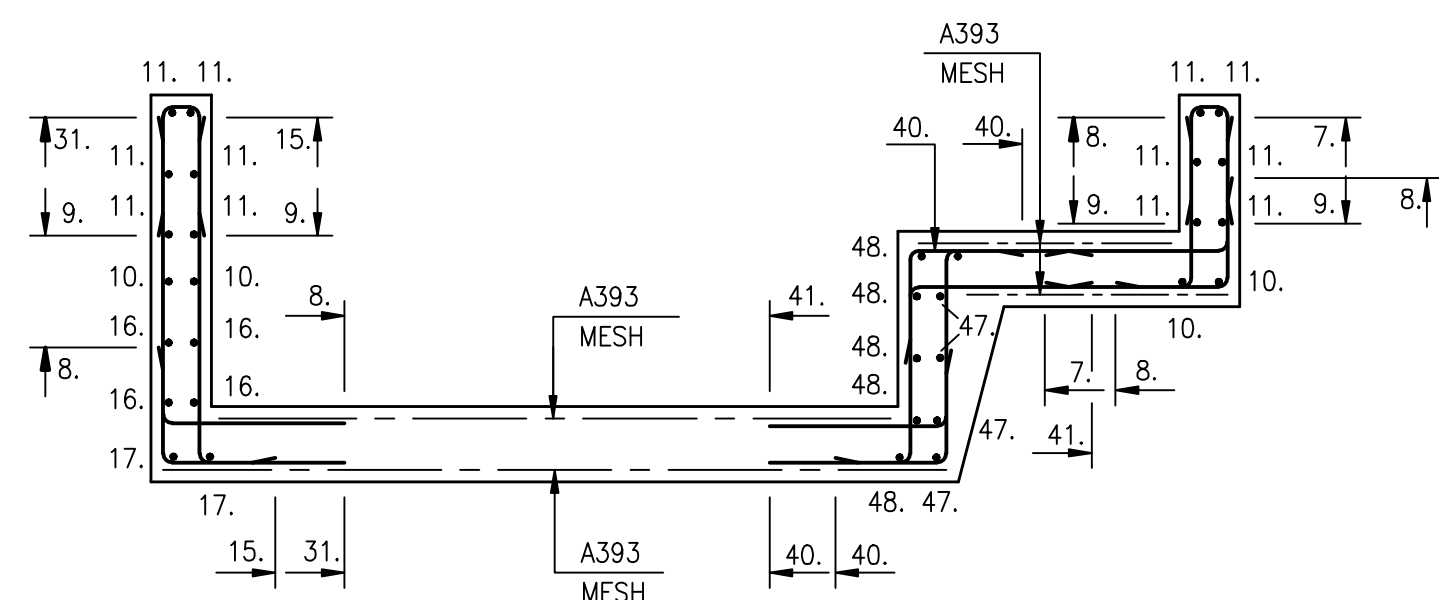
SECTION 6-6.



SECTION 7-7.



SECTION 8-8.



SECTION 9-9.

NOTES

1. ALL MATERIALS AND WORKMANSHIP TO BE STRICTLY IN ACCORDANCE WITH THE SPECIFICATION AND ALL RELEVANT BRITISH STANDARDS.
2. ABBREVIATIONS
B-BOTTOM T-TOP
EF-EACH FACE NF-NEAR FACE FF-FAR FACE
AB-ALTERNATE BARS.
ABS-ALTERNATE BARS STAGGERED
ABR-ALTERNATE BARS REVERSED
3. ALL REINFORCEMENT TO BE HIGH YIELD TYPE B500A, B500B OR B500C RIBBED BARS TO BS4449:2005.
4. BENDING AND SCHEDULING OF REINFORCEMENT TO BE IN ACCORDANCE WITH BS 8666 : 2005
5. CONCRETE COVER TO ALL REINFORCEMENT TO BE 40mm UNLESS NOTED OTHERWISE.
6. REINFORCEMENT DETAILED ON THIS DRAWING IS SCHEDULED ON BAR LISTS Nos 319/1-4.
7. THIS DRAWING TO BE READ IN CONJUNCTION WITH RELEVANT ARCHITECTS DRAWINGS & SEJC DETAILS.
8. ALL KICKERS TO BE 150 HIGH.

MK REVISIONS

BY

DATE

CHK

STATUS:-

AS BUILT

DRAWN BY _ _ BT. DATE _ _ DEC '07
CHECKED BY _ _ DATE _ _
PROJECT ENGINEER _ _ DATE _ _

CLIENT.

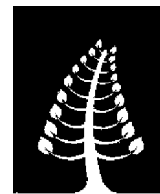
CTP S JAMES

ARCHITECT.

FaulknerBrowns

CONTRACT

WAKEFIELD WATERFRONT
BUILDING 20



SEJC Consulting Engineers
Consulting Structural & Civil Engineers

Sanderson House, Station Road, Horforth, Leeds LS18 5NT
Telephone 0113 2590090 Fax 0113 2599840

DRAWING TITLE

RC DETAILS OF PITS &
FOUNDATION OF FLOOD
BARRIER TYPE A.
SHEET 2

SCALES 1:50 & 1:25

CONTRACT No 501180C
DRG No 20-320